

BMJ Group



The basics of co production

**Emma Doble, Esther Greaney, Gabby Mathews and
Prachi Khanna**



Today's agenda

01

What is co production
and what are the key
terms used

02

Co production
principles and
examples

03

Group discussions

04

Ask us anything

What is co production?

The definition

Patient involvement means **actively engaging** patients, carers, and the public in all aspects of healthcare, rather than just **passively receiving** care or being subjects of research.

Doing things **with** patients, not **for** or **about** them.

#NothingAboutUsWithoutUs



What are the common terms used?

The words and phrases we use (the who and what)

- Patient and/or public
- Consumer
- People with lived experience (PWLE, PLEX)

+

- Involvement (PPI)
- Partnership (patient/community)
- Engagement



What are the key principles?

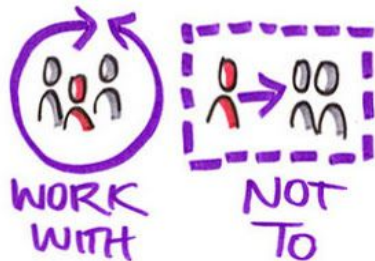
- Collaboration
- Starting as early as possible
- Listening and hearing
- Setting and managing expectations
- Building relationships



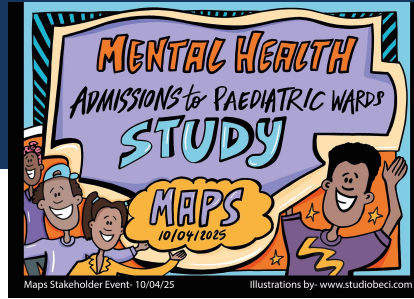
Busting some myths

What co production is NOT

- Recruiting patients to a study
- A survey or focus group
- A tick box exercise
- An extractive relationship



What does co production actually look like?



What does co production actually look like?



Esther Greaney

Lived Experience Peer Support Worker, NHS England

Group discussions

1. Within your groups identify one piece of work about to start, or ongoing, where co production would be relevant
2. Develop a co production plan for this work - you have a facilitation guide to support (25mins)
3. Sharing learnings/feedback (15mins)



Ask us anything



Where can you find more information



Scan the QR code for a list of
resources (in both English and Dutch)
on co production

Thank you for joining us