

It's all about people –
big scale transformation
for integrated people-
centred care

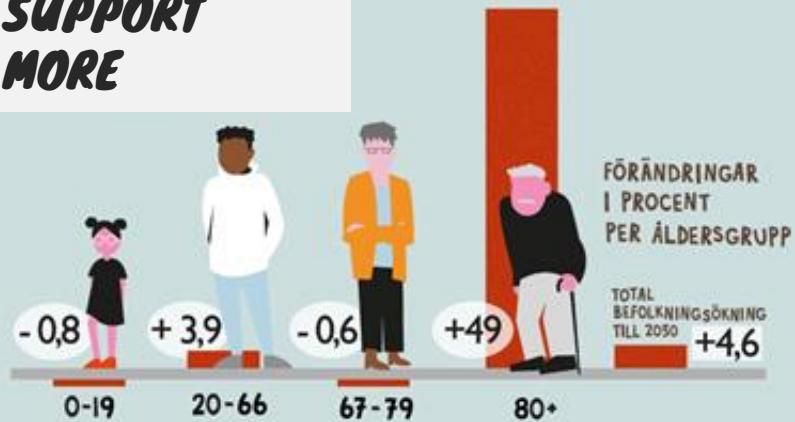
Anette Nilsson, Annelie Forsgren
Jönköping County



Health is in joy be occupied by
doing your life tasks

Changes from the current health care system, which is built around diseases and institutions, to a system designed for people's everyday life

**FEWER WILL
SUPPORT
MORE**



**WHY DO
WE DO THE
TRANSFORMATION
TO A MORE
PEOPLE
CENTERED
INTEGRATED
HEALTH CARE?**

**CHANGING
NEEDS**



DIGITIZATION IS CHANGING BEHAVIOR

**EQUAL
CONDITIONS
FOR HEALTH**



Shared goal picture, municipality and region



Guiding principles

1. Best for the resident
2. Take responsibility for my next step, give feedback to the step before and facilitate for the step after
3. We do it together

We start from the needs for Esther; Britt-Marie and her loved ones. Together we co-create with them and their network the transition to a people centered integrated health care



Follow-up with stories and measurements

*Anette Nilsson, Anneli Forsgren
Nära vård Jönköping*



KOMMUNAL UTVECKLING
JÖNKÖPINGS LÄN

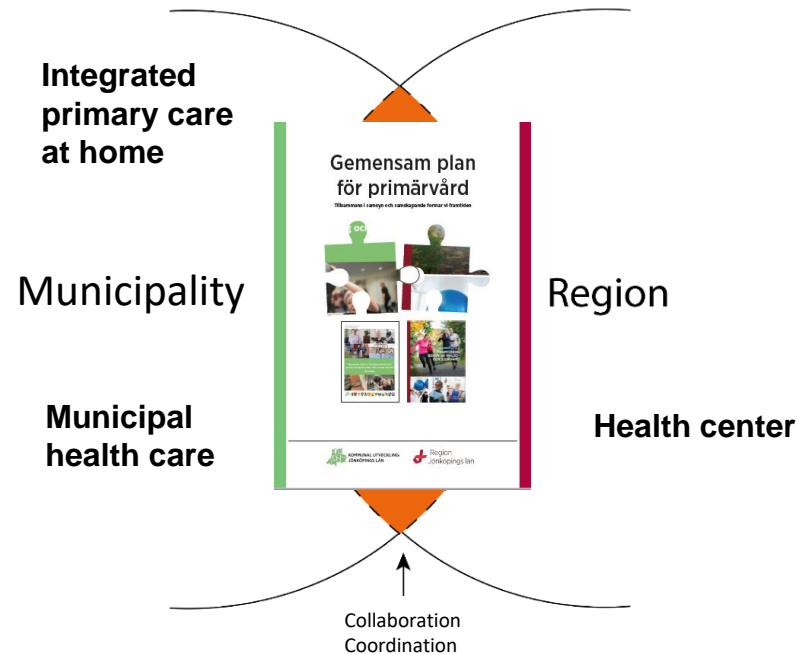
 Region
Jönköpings län

Common plan for primary care

The picture shows that the region has its strategic focus document on what the region needs to do and the municipalities have their strategic focus document on what the municipalities need to do. In the middle, the plan for primary care and the collaboration area that will increase in the transition to more people centered and integrated health care.



Collaboration between municipality/region for conversion to integrated care



*Referens: Huvudbetänkande för utredningen God och nära vård, Anna Nergårdh



Anette Nilsson, Anneli Forsgren, Jonas Almgren



TOGETHER WE MEET THE FUTURE NEEDS FOR HEALTHCARE

2020-2030



Six overall strategies

1. Strengthen the inhabitants own resources and contribute to a society that supports healthy choices in everyday life.
2. Increase safety through equal, safe and person-centered care.
3. Simpler everyday life for patients and employees with the support of adapted service offerings and increased digitization.
4. Primary care is the base, specialized and highly specialized diagnostics and hospital care are available when needed.
5. Development of the work of future with a focus on employeeship and skills renewal
6. Lead and develop to strengthen good relationships that contribute seamless collaboration, where value is created together.




STRATEGY 1

Strengthen the inhabitants own resources and contribute to a society that supports healthy choices in everyday life.

Four overall strategies

1. Targeted support for health promotion and prevention
2. Collaboration and continuity for residents with complex needs
3. Changed working methods
4. Strengthened conditions





"Everyone who is involved knows my aims and works together with me to achieve them"

Strategy 2

Collaboration and continuity for residents with complex needs

MEASUREMENT AREAS

- Participation
- Continuity
- Access
- Coordinated care



KOMMUNAL UTVECKLING
JÖNKÖPINGS LÄN

Common plan for primary care

Together in consensus and co-creation, we shape the future



Common competence development for people centered and integrated health care - as part of a common plan for primary care

Lärandet ett gemensamt ansvar för
hälsa vård omsorg och stöd

UTFÖRANDE
Att låta genom ett göra
och reflektera
(informellt lärande)

UPPTÄCKANDE
Ta reda på saker
(informellt lärande)



UTBYTANDE
Interaktion med andra
(socialt lärande)

UNDERVISANDE
Kunskapsöverföring
(formellt lärande)

- Inomhållare med vårdbehov
- Studenter - Samtliga medarbetare
- Yrkesutövare
- Chefer
- Den unika arbetsplatsen



KOMMUNAL UTVECKLING
JÖNKÖPINGS LÄN



Patient contract



Agreement

Common agreement between patient and health care

Cooperation

Planning, overview and support for coordinated care

Continuity

Person with a coordination responsibility



Access

Time for care, patients and care givers agree on the time for an appointment



Value makes it happen

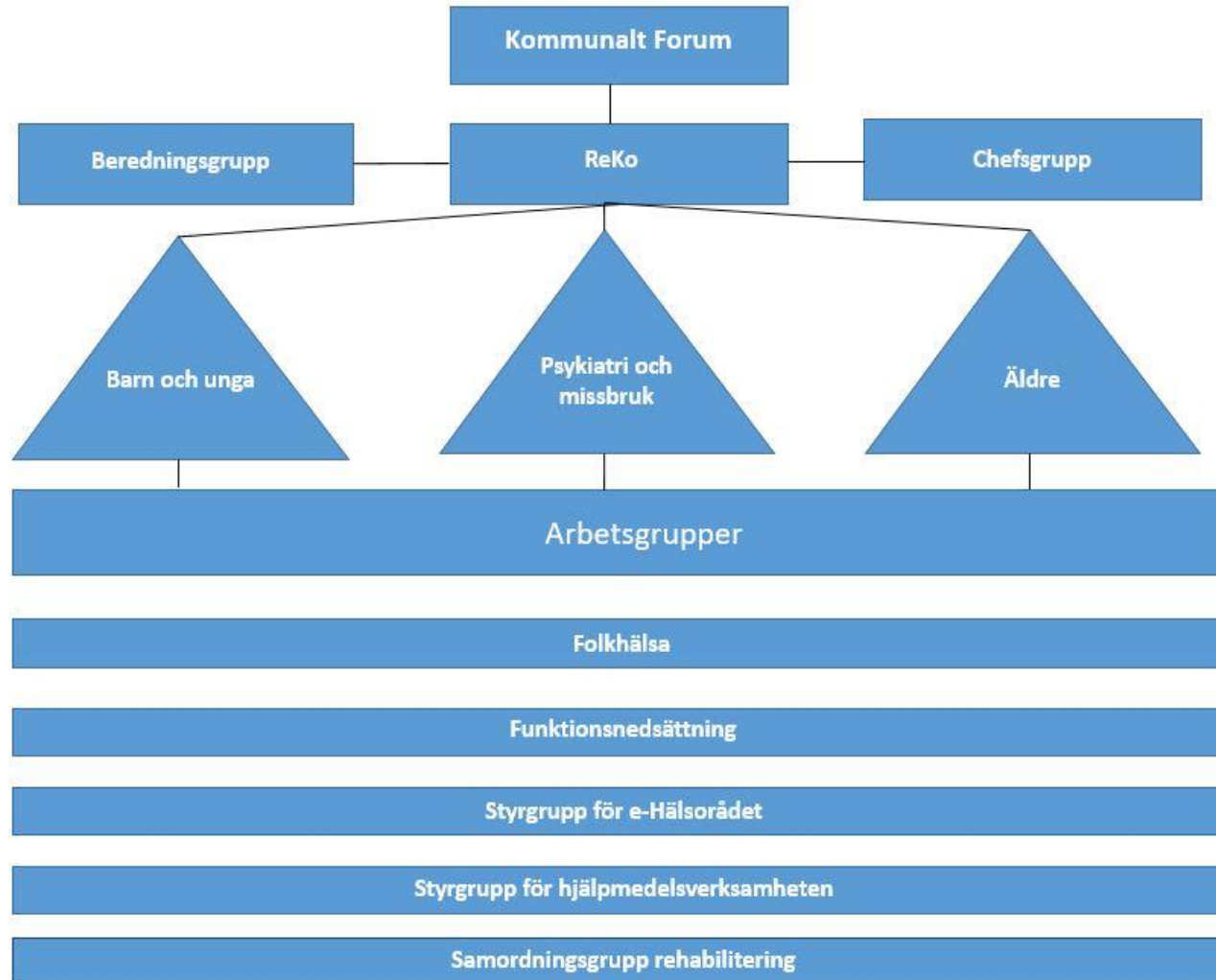
- To achieve
- participation
 - coordination
 - access
 - cooperation



KOMMUNAL UTVECKLING
JÖNKÖPINGS LÄN

Region
Jönköpings län

ReKo: Common management system - Collaboration between region and municipalities in Jönköping county.





Region och kommuner i Jönköpings län i samverkan



Region och kommuner i Jönköpings län i samverkan



Region och kommuner i Jönköpings län i samverkan

Best place to live

Common development platform.

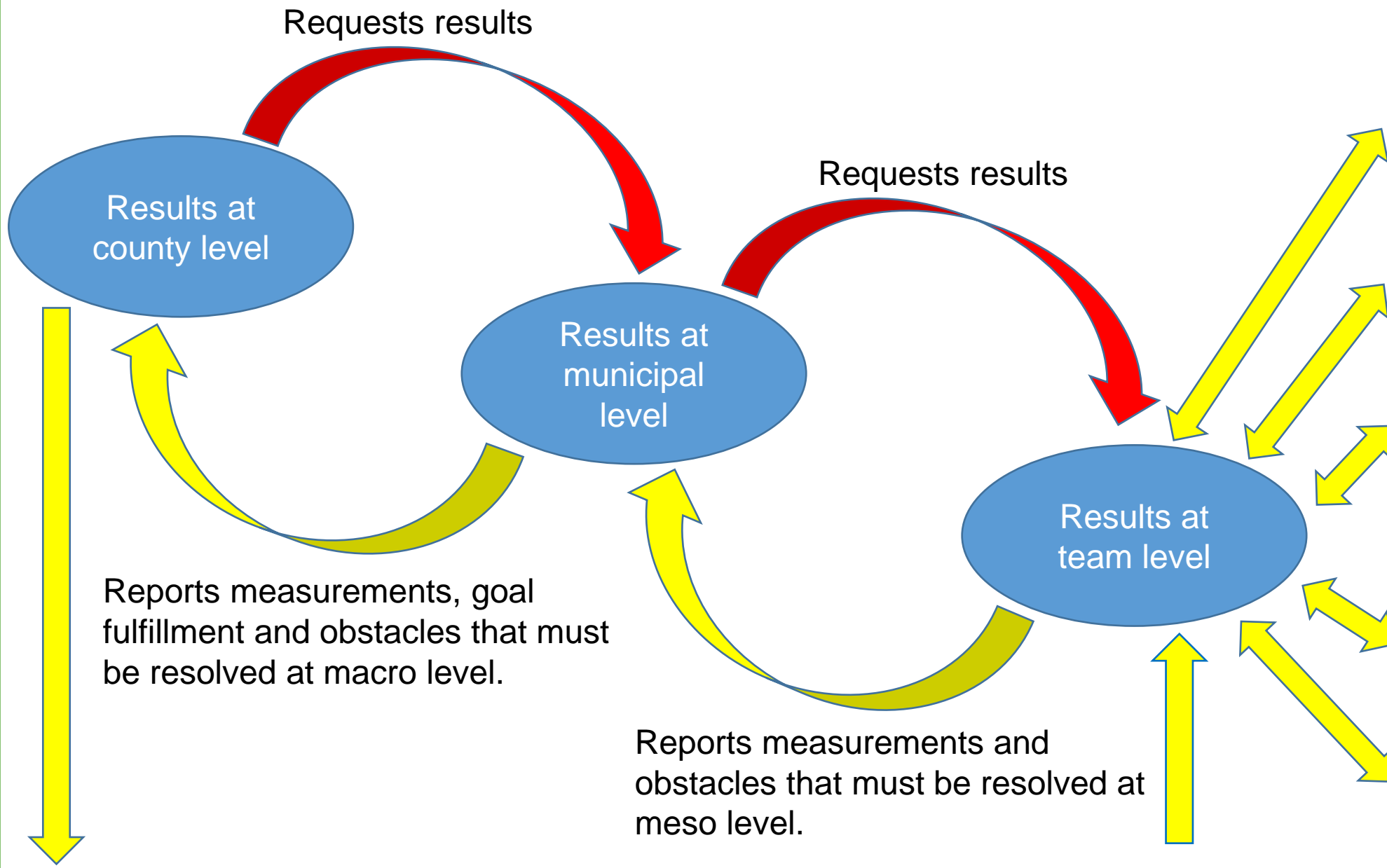
Teams working together with improvements in different areas – 13 municipalities and region in collaboration.



KOMMUNAL UTVECKLING
JÖNKÖPINGS LÄN



Region
Jönköpings län



Common plan for competence development



THANK YOU